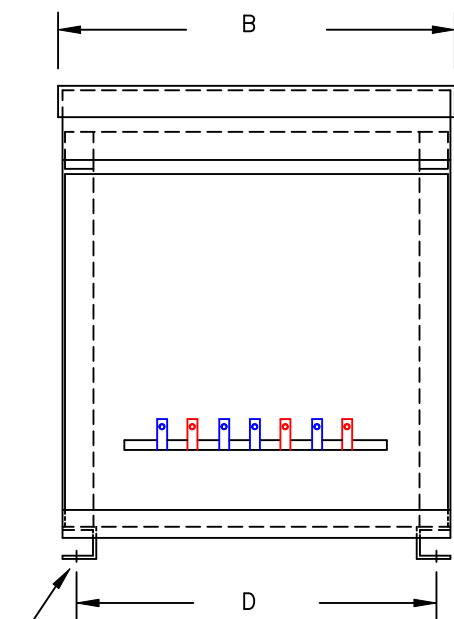


TYPICAL WIRING DIAGRAM

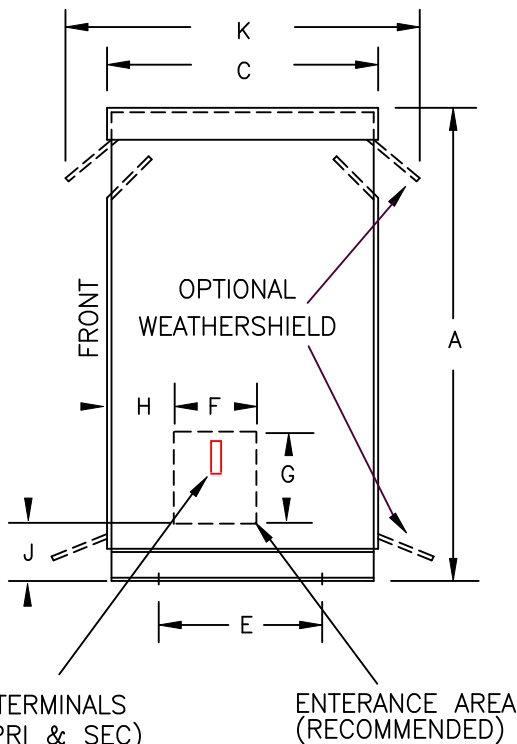
**NOTES:**

1. ALL UNITS ARE cUL LISTED & DESIGNED ACCORDANCE WITH INDUSTRY STANDARDS.
2. TRANSFORMERS ARE DRY-TYPE, CLASS AA, VENTILATED NEMA 2 ENCLOSED FOR INDOOR USE.
3. TRANSFORMERS ARE FLOOR MOUNTED.
4. AVAILABLE ACCESSORIES FOR THIS UNIT:  
A) OUTDOOR WEATHERSHIELD KIT
5. TRANSFORMERS ARE CONSTRUCTED BASED UPON A 40°C AMBIENT ENVIRONMENT.
6. MAINTAIN 1" CLEARANCE FROM ALL LIVE PARTS.
7. PAINT COLOR IS ANSI #61.

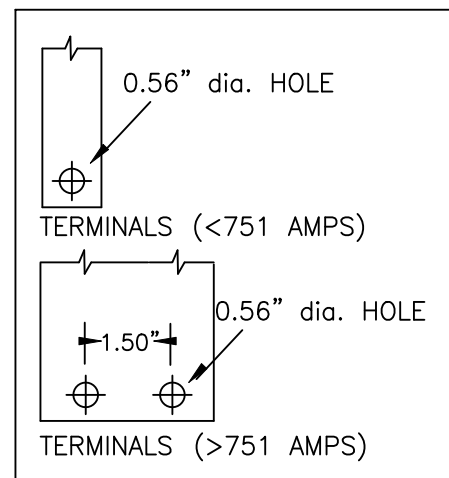


(4) 0.625" dia. MOUNTING HOLES

FRONT VIEW



SIDE VIEW



TERMINAL DETAILS

**APPROXIMATE DIMENSIONS ( INCHES )**

| KVA    | A     | B     | C     | D     | E     | F    | G     | H    | J    | K     | L     | BOX      | lbs. | WEATHER SHIELD | TERMINAL TYPE |
|--------|-------|-------|-------|-------|-------|------|-------|------|------|-------|-------|----------|------|----------------|---------------|
| 225.0* | 72.75 | 53.38 | 36.88 | 49.63 | 32.00 | 6.00 | 12.00 | 5.00 | 7.50 | 42.38 | ----- | 3PT-500K | 2550 | WS-16          | BUSBAR        |

\* ELECTROSTATIC SHIELD GROUNDED TO TRANSFORMER CASE AT FACTORY ( IF APPLICABLE )

DRAWINGS  
 APPROVAL  
 RECORD  
 OTHER

|                        |  |  |                            |
|------------------------|--|--|----------------------------|
| PRIMARY VOLTAGE        | 480 DELTA  | CUST.  | XXXXXXXXXX                 |
| SECONDARY VOLTAGE      | 208Y/120   | JOB  |                            |
| TEMPERATURE RISE IN °C | 80   | CATALOG  |                            |
| WINDINGS & TERMINALS   | <input type="checkbox"/> ALUMINUM <input checked="" type="checkbox"/> COPPER | NOTE   | ELECTROSTATICALLY SHIELDED |
| FREQUENCY IN HERTZ     | 60   | BY   | ENG. LOG.                  |
| PRIMARY TAPS           | 432, 444, 456, 468, 492, 504   | DATE   | TITLE                      |
|                        |  | REV  | MFG. LOG.                  |
|                        |  | DATE:  | DWG. FILE                  |
|                        |  | DWG. NO.   |                            |
|                        |  | 3-PHASE, 600 VOLT CLASS<br>ISOLATION<br>DRY TYPE TRANSFORMER |                            |
|                        |  | 3PT40-225K-B-CU-E2   |                            |

