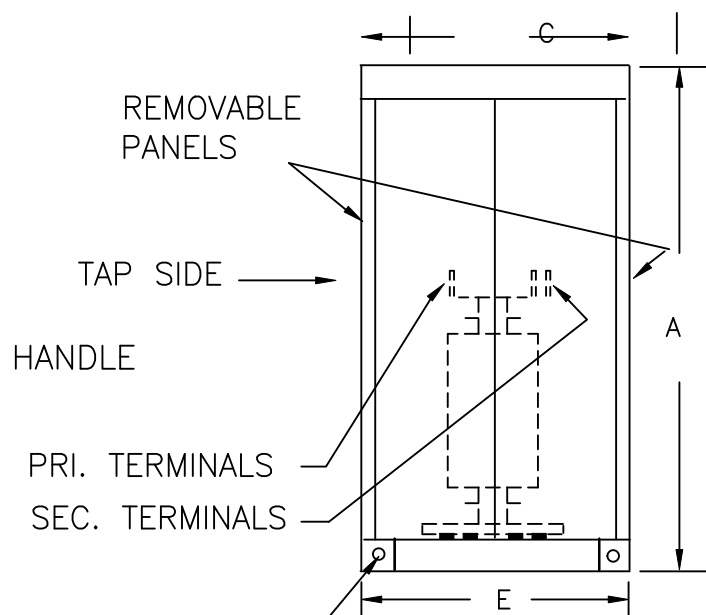
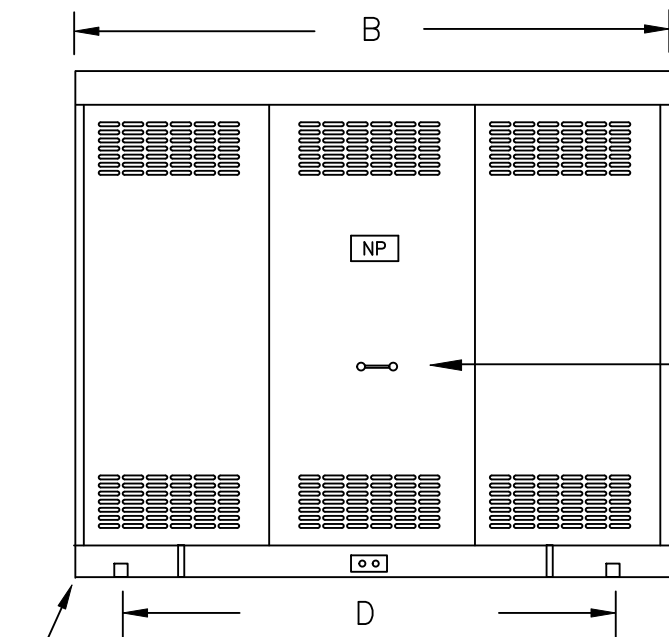


TYPICAL WIRING DIAGRAM

NOTES:

1. ALL UNITS ARE cUL LISTED & DESIGNED WITH APPLICABLE NEMA, ANSI, AND IEEE STANDARDS.
2. TRANSFORMERS ARE DRY-TYPE, CLASS AA, VENTILATED NEMA 1 ENCLOSURE FOR INDOOR USE.
3. TRANSFORMERS ARE FLOOR MOUNTED.
4. TRANSFORMERS HAVE 220°C CLASS INSULATION SYSTEM WITH THE AVERAGE WINDING TEMPERATURE RISE BASED ON 40°C MAXIMUM AMBIENT.
5. PAINT COLOR IS ANSI #61.



(4) 5/8" MOUNTING HOLES

JACKING, TOWING & LIFTING PROV.

APPROXIMATE DIMENSIONS (INCHES)

| KVA | A | B | C | D | E | F | G | H | J | K | L | BOX | lbs. | WEATHER SHIELD | TERMINAL TYPE |
|-------|-------|-------|-------|-------|-------|------|------|------|------|------|------|-----|------|----------------|---------------|
| 300.0 | 90.00 | 90.00 | 58.00 | 80.00 | 54.50 | ---- | ---- | ---- | ---- | ---- | ---- | 3-P | 4200 | N/A | BUSBAR |

DRAWINGS
☒ APPROVAL
☐ RECORD
☐ OTHER

| | | | |
|------------------------|--|----------|--|
| PRIMARY VOLTAGE | 13200 DELTA (60kV BIL) | CUST. | XXXXXXXX |
| SECONDARY VOLTAGE | 480Y/277 (10kV BIL) | JOB | |
| TEMPERATURE RISE IN °C | 150 | CATALOG | |
| WINDINGS & TERMINALS | <input checked="" type="checkbox"/> ALUMINUM <input type="checkbox"/> COPPER | NOTE | BUSSED-TO-THE-ENDS (CLOSED-COUPLED to SWITCHGEAR) |
| FREQUENCY IN HERTZ | 60 | BY | ENG. LOG. |
| PRIMARY TAPS | +2, -2 @ 2.5% | DATE | |
| | | REV | MFG. LOG. |
| | | DATE: | DWG. FILE |
| | | TITLE | 3-PHASE, HIGH VOLTAGE ISOLATION DRY TYPE TRANSFORMER |
| | | DWG. NO. | 3PTN735-300K-E2 |