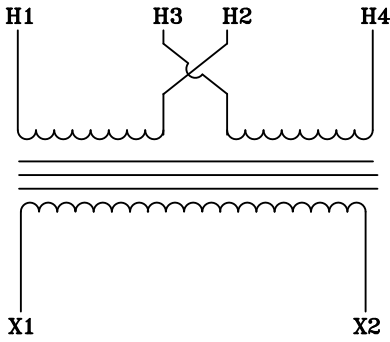
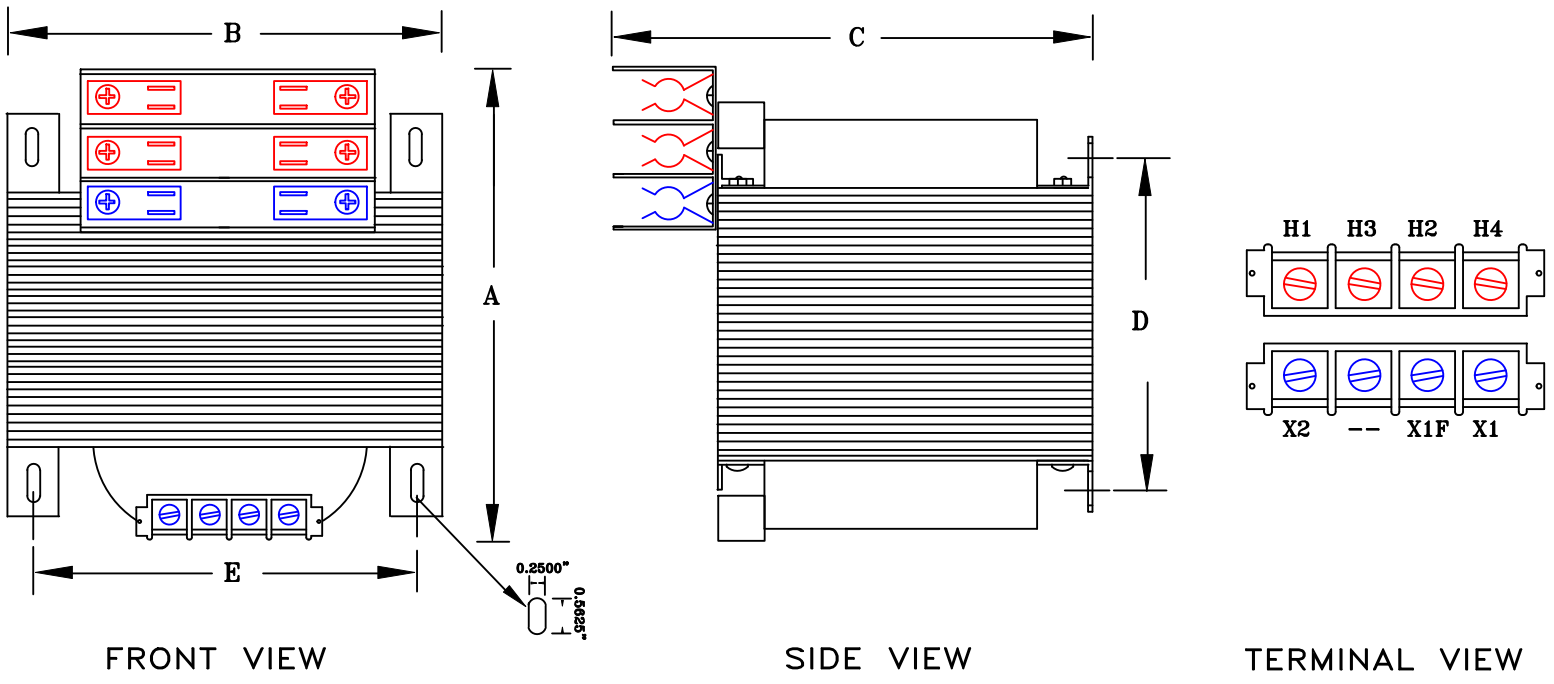


NOTES:

1. ALL UNITS ARE cUL LISTED & DESIGNED ACCORDANCE WITH INDUSTRY STANDARDS.
2. TRANSFORMERS ARE DRY-TYPE, CLASS AA, VENTILATED, OPEN-STYLE ASSEMBLY FOR INDOOR/CONTROL PANEL USE.
3. TRANSFORMER ARE BASE MOUNTED.
4. TRANSFORMERS ARE CONSTRUCTED BASED UPON A 40°C AMBIENT ENVIRONMENT.
5. MAINTAIN 1" CLEARANCE FROM ALL LIVE PARTS.



TYPICAL WIRING DIAGRAM



FRONT VIEW

SIDE VIEW

TERMINAL VIEW

APPROXIMATE DIMENSIONS (INCHES)

| KVA | A | B | C | D | E | 3-POLE PRIMARY FUSE BLOCK | PRIMARY COVER | SECONDARY COVER | HARDWARE | (4) MTG SLOTS | STEEL | STACK | WEIGHT |
|-------|------|------|------|------|------|---------------------------|---------------|-----------------|----------|-----------------|--------|-------|--------|
| 0.050 | 4.00 | 3.00 | 4.88 | 2.00 | 2.50 | INCLUDED | INCLUDED | INCLUDED | 1/4-20 | 0.250" x 0.562" | EI-100 | 1.00 | 3 |

DRAWINGS
 APPROVAL
 RECORD
 OTHER

| | | | |
|------------------------|--|--------------|-----------|
| PRIMARY VOLTAGE | 120 x 240 | CUST. | XXXXXXXX |
| SECONDARY VOLTAGE | 24 | JOB | |
| TEMPERATURE RISE IN °C | 55 | CATALOG | |
| WINDINGS & TERMINALS | <input type="checkbox"/> ALUMINUM <input checked="" type="checkbox"/> COPPER | NOTE | XXXXXXXX |
| FREQUENCY HERTZ | 50/60 | BY | ENG. LOG. |
| PRIMARY TAPS | NONE | DATE | TITLE |
| | | REV | MFG. LOG. |
| | | DATE: | DWG. FILE |
| | | DWG. NO. | |
| | | A168MT50-3FB | |