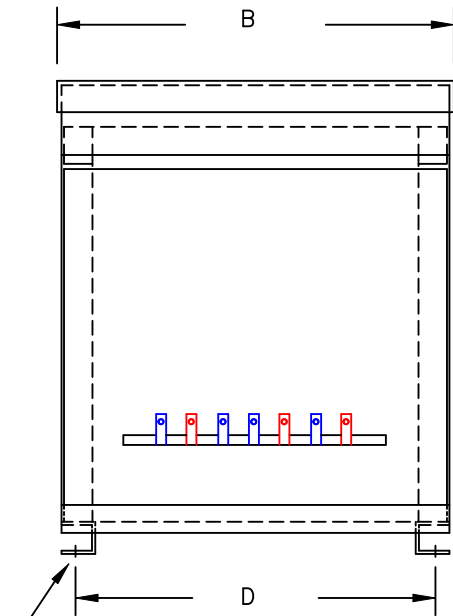


TYPICAL WIRING DIAGRAM

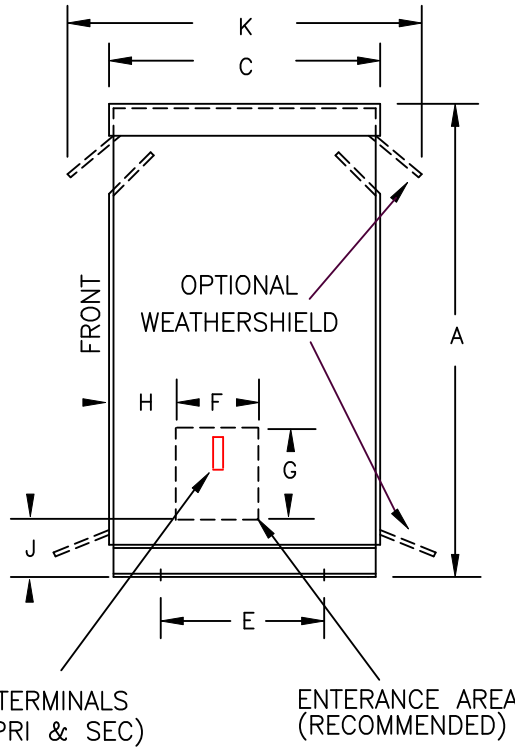
NOTES:

1. ALL UNITS ARE cUL LISTED AND DESIGNED ACCORDANCE WITH INDUSTRY STANDARDS.
2. TRANSFORMERS ARE DRY-TYPE, CLASS AA, VENTILATED NEMA 2 ENCLOSED FOR INDOOR USE.
3. TRANSFORMERS ARE FLOOR MOUNTED.
4. AVAILABLE ACCESSORIES FOR THIS UNIT:
A) OUTDOOR WEATHERSHIELD KIT
5. TRANSFORMERS ARE CONSTRUCTED BASED UPON A 40°C AMBIENT ENVIRONMENT.
6. MAINTAIN 1" CLEARANCE FROM ALL LIVE PARTS.
7. PAINT COLOR IS ANSI #61.



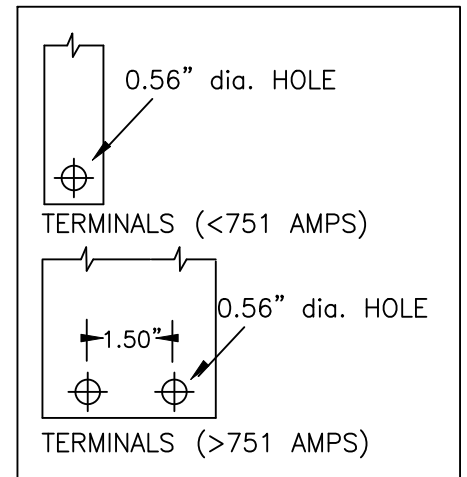
(4) 0.625" dia. MOUNTING HOLES

FRONT VIEW



TERMINALS (PRI & SEC) ENTRANCE AREA (RECOMMENDED)

SIDE VIEW



TERMINAL DETAILS

APPROXIMATE DIMENSIONS (INCHES)

| KVA | A | B | C | D | E | F | G | H | J | K | L | BOX | lbs. | WEATHER SHIELD | TERMINAL TYPE |
|-------|-------|-------|-------|-------|-------|------|-------|------|------|-------|-------|----------|------|----------------|---------------|
| 500.0 | 72.75 | 53.38 | 36.88 | 49.63 | 32.00 | 6.00 | 12.00 | 5.00 | 7.50 | 42.38 | ----- | 3PT-500K | 3340 | WS-16 | BUSBAR |

* ELECTROSTATIC SHIELD GROUNDED TO TRANSFORMER CASE AT FACTORY (IF APPLICABLE)

DRAWINGS
 APPROVAL
 RECORD
 OTHER

| | | | | | |
|------------------------|--|-----------|-----------------|---|--|
| PRIMARY VOLTAGE | 480 DELTA | CUST. | XXXXXXXXXX | | |
| SECONDARY VOLTAGE | 200Y/115 | JOB | | | |
| TEMPERATURE RISE IN °C | 150 | CATALOG | | | |
| WINDINGS & TERMINALS | <input checked="" type="checkbox"/> ALUMINUM <input type="checkbox"/> COPPER | NOTE | XXXXXXX | | |
| FREQUENCY IN HERTZ | 60 | BY | ENG. LOG. | TITLE 3-PHASE, 600 VOLT CLASS ISOLATION DRY TYPE TRANSFORMER | |
| PRIMARY TAPS | 432, 444, 456, 468, 492, 504 | DATE | | | |
| POWERTRAN | REV | MFG. LOG. | DWG. NO. | | |
| | DATE: | DWG. FILE | 3PTN813-500K-E2 | | |