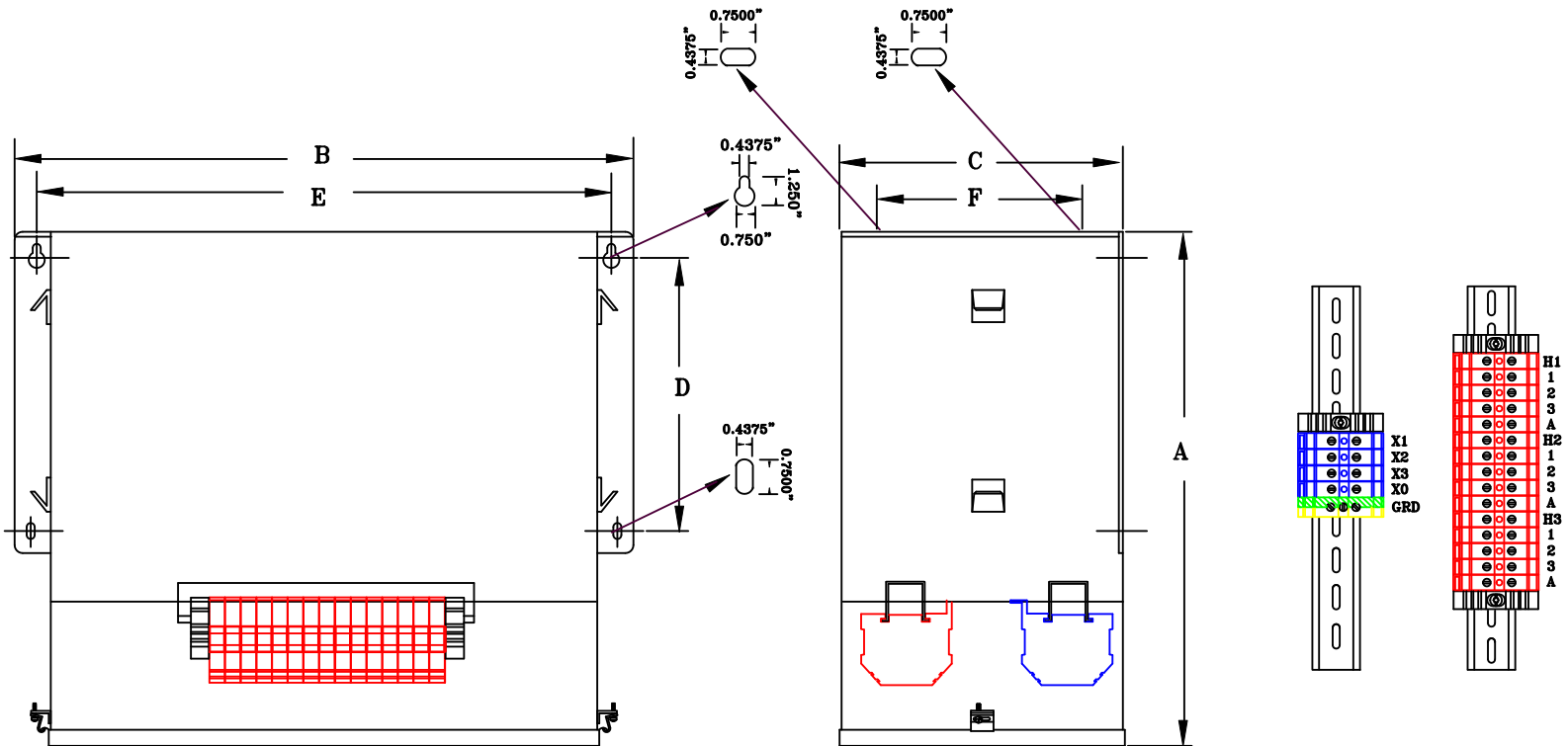


TYPICAL WIRING DIAGRAM

**NOTES:**

1. ALL UNITS ARE cUL LISTED & DESIGNED ACCORDANCE WITH INDUSTRY STANDARDS.
2. TRANSFORMERS ARE DRY-TYPE, CLASS AA, ENCAPSULATED NEMA 1 ENCLOSED FOR INDOOR USE.
3. TRANSFORMERS ARE WALL/MACHINE MOUNTABLE VIA SIDE (OR) TOP BRACKETS.
4. TRANSFORMERS ARE CONSTRUCTED BASED UPON A 40°C AMBIENT ENVIRONMENT.
5. MAINTAIN 1" CLEARANCE FROM ALL LIVE PARTS.
6. PAINT COLOR IS RAL# 7042.



FRONT VIEW

SIDE VIEW

TERMINAL VIEW

**APPROXIMATE DIMENSIONS ( INCHES )**

| KVA | A     | B     | C    | D    | E     | F    | HARDWARE | MTG SLOTS       | ENCLOSURE | WEIGHT | WEATHER SHIELD | TERMINAL TYPE |
|-----|-------|-------|------|------|-------|------|----------|-----------------|-----------|--------|----------------|---------------|
| 9.0 | 16.50 | 19.12 | 8.50 | 8.50 | 17.88 | 3.50 | 3/8-16   | 0.437" x 0.750" | 3N10-UM   | 195    | N/A            | TBs           |

\* ELECTROSTATIC SHIELD GROUNDED TO TRANSFORMER CASE AT FACTORY ( IF APPLICABLE )

DRAWINGS  
 APPROVAL  
 RECORD  
 OTHER

|                        |  |         |           |   |
|------------------------|--|---------|-----------|---|
| PRIMARY VOLTAGE        | 480 DELTA  | CUST.   | XXXXXXXX  |   |
| SECONDARY VOLTAGE      | 200Y/115   | JOB     |           |   |
| TEMPERATURE RISE IN °C | 115  | CATALOG |           |   |
| WINDINGS & TERMINALS   | <input type="checkbox"/> ALUMINUM <input checked="" type="checkbox"/> COPPER | NOTE    | XXXXXXX   |   |
| FREQUENCY IN HERTZ     | 60   | BY      | ENG. LOG. | TITLE<br>3-PHASE, 600 VOLT CLASS<br>ISOLATION<br>DRY TYPE TRANSFORMER |
| PRIMARY TAPS           | 456, 504   | DATE    |           |   |
|                        |  | REV     | MFG. LOG. | DWG. NO.<br><br>3EF813FST9  |
|                        |  | DATE:   | DWG. FILE |   |