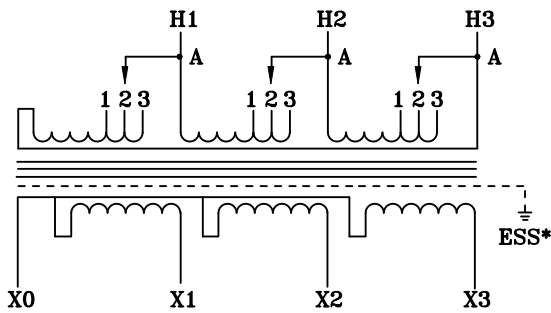
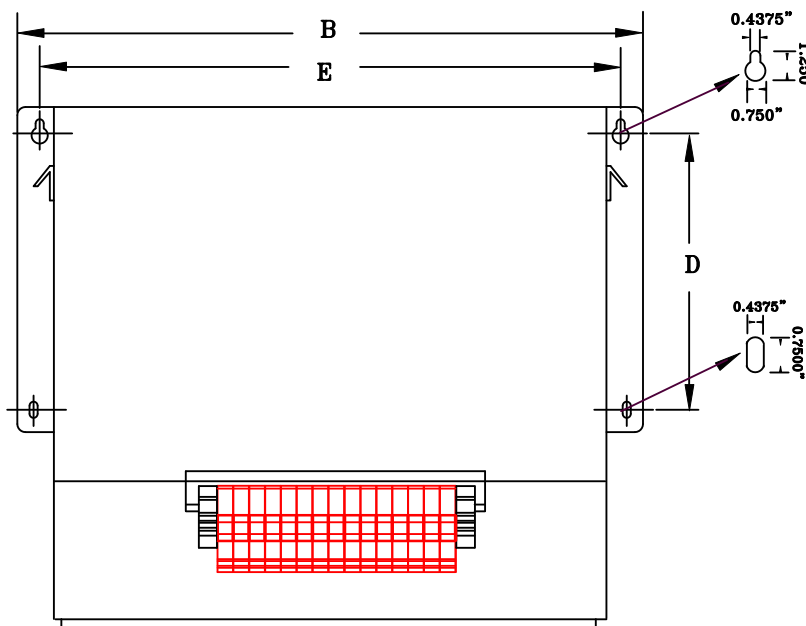


NOTES:

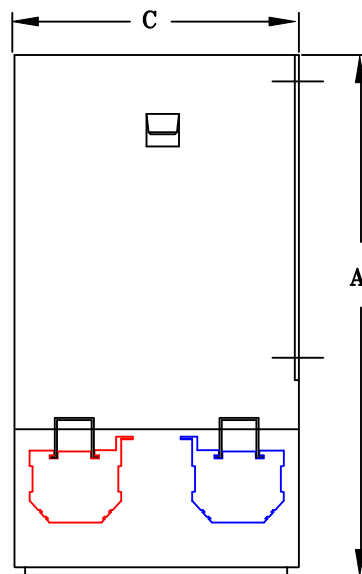
1. ALL UNITS ARE cUL LISTED & DESIGNED ACCORDANCE WITH INDUSTRY STANDARDS.
2. TRANSFORMERS ARE DRY-TYPE, CLASS AA, ENCAPSULATED NEMA 4X ENCLOSED FOR INDOOR / OUTDOOR USE.
3. TRANSFORMERS ARE WALL / MACHINE MOUNTABLE VIA THE ATTACHED BRACKETS.
4. TRANSFORMERS ARE CONSTRUCTED BASED UPON A 40°C AMBIENT ENVIRONMENT.
5. MAINTAIN 1" CLEARANCE FROM ALL LIVE PARTS.
6. NOT PAINTED (STAINLESS STEEL)



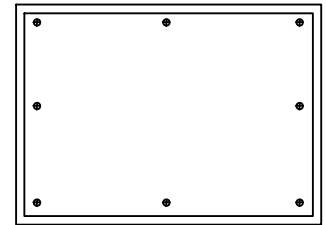
TYPICAL WIRING DIAGRAM



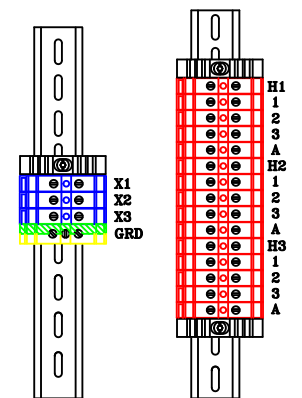
FRONT VIEW



SIDE VIEW



BOTTOM VIEW



TERMINAL STRIP

APPROXIMATE DIMENSIONS (INCHES)

| KVA | A | B | C | D | E | F | HARDWARE | MTG SLOTS | ENCLOSURE | lbs. | WEATHER SHIELD | TERMINAL TYPE |
|-----|-------|-------|-------|------|-------|------|----------|-----------------|-----------|------|----------------|---------------|
| 9.0 | 16.25 | 20.75 | 10.00 | 8.50 | 19.25 | ---- | 3/8-16 | 0.437" x 0.750" | 3N10-N4 | 200 | N/A | TBs |

* ELECTROSTATIC SHIELD GROUNDED TO TRANSFORMER CASE AT FACTORY (IF APPLICABLE)

DRAWINGS
 APPROVAL
 RECORD
 OTHER

| | | | |
|------------------------|--|-----------|--|
| INPUT VOLTAGE | 480 DELTA | CUST | XXXXXXXXXX |
| OUTPUT VOLTAGE | 208Y/120 | JOB | |
| TEMPERATURE RISE IN °C | 130 | CUST # | |
| WINDINGS & TERMINALS | <input type="checkbox"/> ALUMINUM <input checked="" type="checkbox"/> COPPER | NOTE | XXXXXXXXXX |
| FREQUENCY IN HERTZ | 60 | BY | ENG. LOG. TITLE 3-PHASE, 600 VOLT CLASS AUTO DRY TYPE TRANSFORMER |
| INPUT TAPS | 456, 504 | DATE | |
| POWERTRAN | REV | MFG. LOG. | DWG. NO. 3N4XF408FST9 |
| | DATE: | DWG. FILE | |