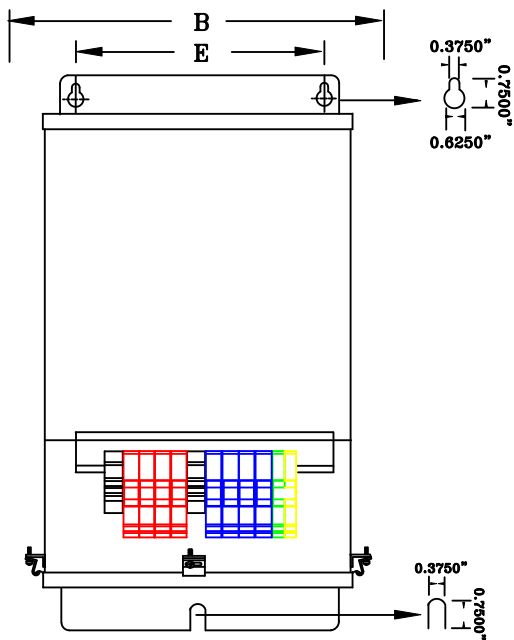


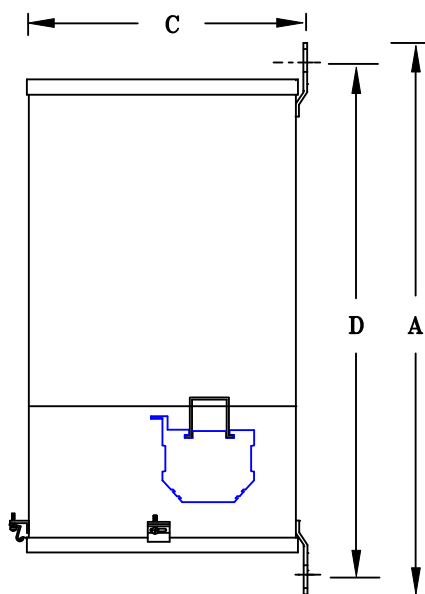
TYPICAL WIRING DIAGRAM

NOTES:

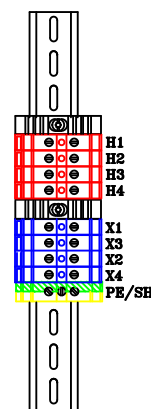
1. ALL UNITS ARE cUL LISTED & DESIGNED ACCORDANCE WITH INDUSTRY STANDARDS.
2. TRANSFORMERS ARE DRY-TYPE, CLASS AA, ENCAPSULATED IP-52 ENCLOSED FOR INDOOR / DUSTPROOF USE.
3. TRANSFORMERS ARE WALL / MACHINE MOUNTABLE VIA THE ATTACHED BRACKETS.
4. TRANSFORMERS ARE CONSTRUCTED BASED UPON A 40°C AMBIENT ENVIRONMENT.
5. MAINTAIN 1" CLEARANCE FROM ALL LIVE PARTS.
6. PAINT COLOR IS RAL# 7042.



FRONT VIEW



SIDE VIEW



TERMINAL VIEW

APPROXIMATE DIMENSIONS (INCHES)

| KVA | A | B | C | D | E | F | HARDWARE | MTG SLOTS | ENCLOSURE | lbs. | WEATHER SHIELD | TERMINAL TYPE |
|------|-------|------|------|-------|------|------|----------|-----------------|-----------|------|----------------|---------------|
| 1.0* | 12.25 | 8.63 | 6.25 | 11.00 | 5.75 | ---- | 1/4-20 | 0.375" x 0.625" | N212-EX | 50 | N/A | TBs |

* ELECTROSTATIC SHIELD GROUNDED TO TRANSFORMER CASE AT FACTORY (IF APPLICABLE)

DRAWINGS
☒ APPROVAL
☐ RECORD
☐ OTHER

| | | | |
|------------------------|--|-------------------|---------------------------------------|
| PRIMARY VOLTAGE | 380-400-415 | CUST. | XXXXXXXX |
| SECONDARY VOLTAGE | 120 x 240 | JOB | |
| TEMPERATURE RISE IN °C | 115 | CATALOG | |
| WINDINGS & TERMINALS | <input type="checkbox"/> ALUMINUM <input checked="" type="checkbox"/> COPPER | NOTE | ELECTROSTATICALLY SHIELDED, CE MARKED |
| FREQUENCY IN HERTZ | 50/60 | BY | ENG. LOG. |
| PRIMARY TAPS | NONE | DATE | TITLE |
| | | REV | MFG. LOG. |
| | | DATE: | DWG. FILE |
| | | DWG. NO. | |
| | | PCE-1-1K-090-IP52 | |

POWERTRAN