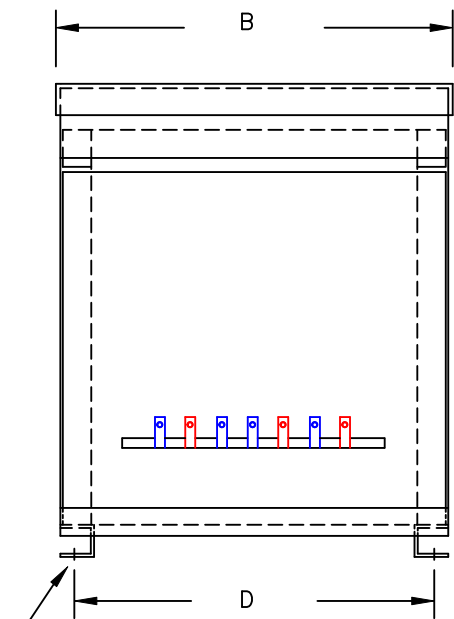


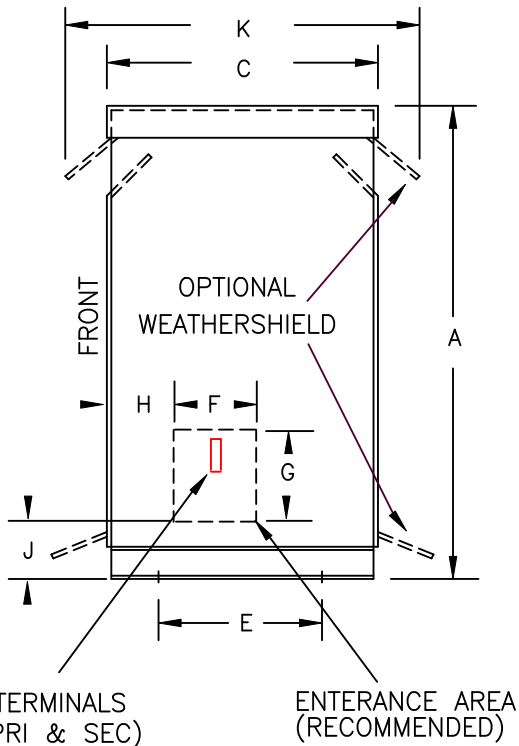
TYPICAL WIRING DIAGRAM

**NOTES:**

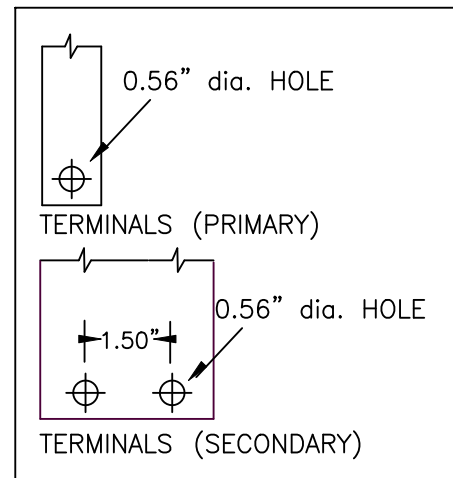
1. ALL UNITS ARE cUL LISTED AND DESIGNED ACCORDANCE WITH INDUSTRY STANDARDS.
2. TRANSFORMERS ARE DRY-TYPE, CLASS AA, VENTILATED NEMA 2 ENCLOSED FOR INDOOR USE.
3. TRANSFORMERS ARE FLOOR MOUNTED.
4. AVAILABLE ACCESSORIES FOR THIS UNIT:  
A) OUTDOOR WEATHERSHIELD KIT  
B) WALL MOUNTING BRACKETS
5. TRANSFORMERS ARE CONSTRUCTED BASED UPON A 40°C AMBIENT ENVIRONMENT.
6. MAINTAIN 1" CLEARANCE FROM ALL LIVE PARTS.
7. PAINT COLOR IS ANSI# 61.



FRONT VIEW



SIDE VIEW



TERMINAL DETAILS

**APPROXIMATE DIMENSIONS ( INCHES )**

| KVA  | A     | B     | C     | D     | E     | F    | G    | H    | J    | K     | L    | BOX    | lbs. | WEATHER SHIELD | TERMINAL TYPE |
|------|-------|-------|-------|-------|-------|------|------|------|------|-------|------|--------|------|----------------|---------------|
| 25.0 | 33.00 | 16.63 | 18.38 | 15.00 | 15.00 | 4.00 | 4.00 | 1.00 | 5.75 | 22.50 | ---- | PT-15K | 195  | WS-3           | BUSBAR        |

\* ELECTROSTATIC SHIELD GROUNDED TO TRANSFORMER CASE AT FACTORY ( IF APPLICABLE )

DRAWINGS  
 APPROVAL  
 RECORD  
 OTHER

|                        |  |         |            |   |  |
|------------------------|--|---------|------------|---|--|
| PRIMARY VOLTAGE        | 208  | CUST.   | XXXXXXXXXX |   |  |
| SECONDARY VOLTAGE      | 120 x 240  | JOB     |            |   |  |
| TEMPERATURE RISE IN °C | 150  | CATALOG |            |   |  |
| WINDINGS & TERMINALS   | <input checked="" type="checkbox"/> ALUMINUM <input type="checkbox"/> COPPER | NOTE    | XXXXXXX    |   |  |
| FREQUENCY IN HERTZ     | 60   | BY      | ENG. LOG.  | TITLE<br>1-PHASE, 600 VOLT CLASS<br>ISOLATION<br>DRY TYPE TRANSFORMER |  |
| PRIMARY TAPS           | 198, 203, 213, 218   | DATE    |            |   |  |
|                        |  | REV     | MFG. LOG.  | DWG. NO.<br><br>PTN877-25K-EE   |  |
|                        |  | DATE:   | DWG. FILE  |   |  |

