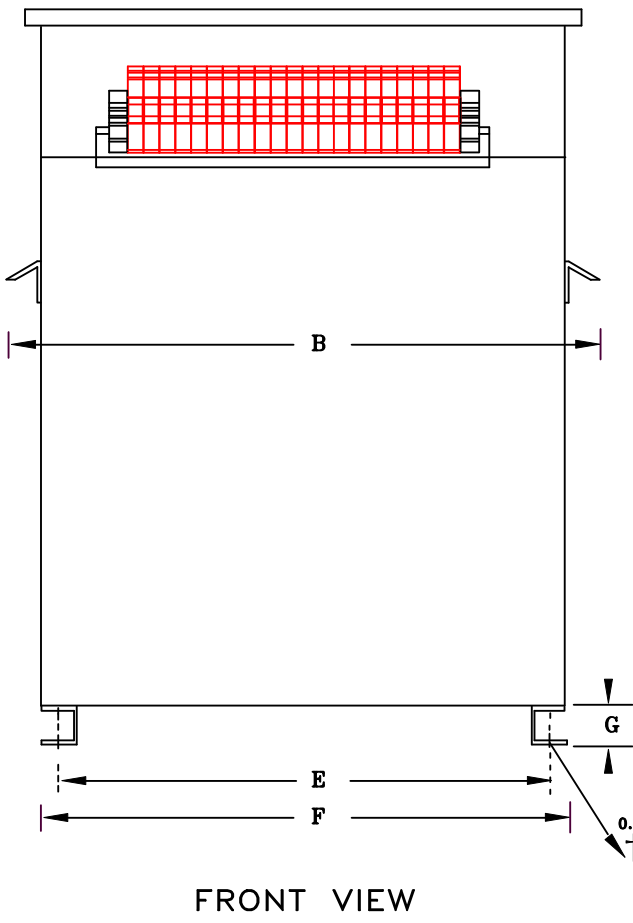


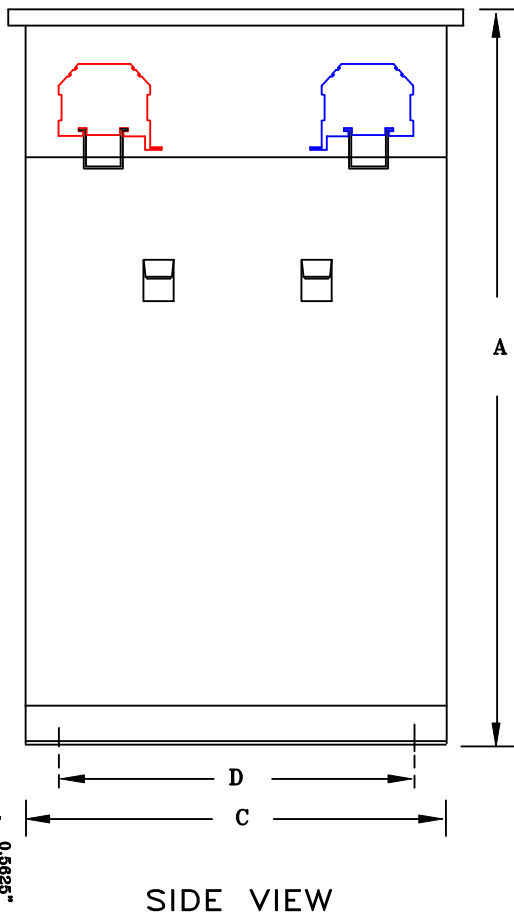
TYPICAL WIRING DIAGRAM

NOTES:

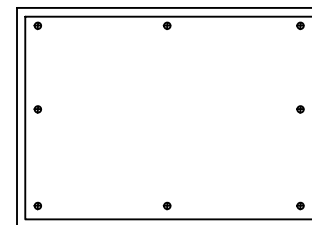
1. ALL UNITS ARE cUL LISTED & DESIGNED ACCORDANCE WITH INDUSTRY STANDARDS
2. TRANSFORMERS ARE DRY-TYPE, CLASS AA, ENCAPSULATED NEMA 4X ENCLOSURE FOR INDOOR / OUTDOOR USE.
3. TRANSFORMERS ARE FLOOR-MOUNTED VIA BOTTOM FLANGE BRACKETS.
4. TRANSFORMERS ARE CONSTRUCTED BASED UPON A 40°C AMBIENT ENVIRONMENT.
5. MAINTAIN 1" CLEARANCE FROM ALL LIVE PARTS.
6. NOT PAINTED (316 STAINLESS STEEL)



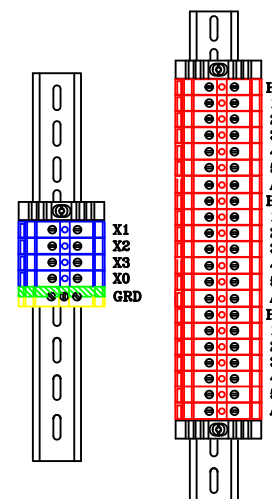
FRONT VIEW



SIDE VIEW



TOP VIEW



TERMINAL VIEW

APPROXIMATE DIMENSIONS (INCHES)

| KVA | A | B | C | D | E | F | G | HARDWARE | MTG SLOTS | ENCLOSURE | WEIGHT | TERMINATIONS |
|------|-------|-------|-------|-------|-------|-------|------|----------|-----------------|-----------|--------|-----------------|
| 30.0 | 26.00 | 26.00 | 14.00 | 10.00 | 21.00 | 23.00 | 3.50 | 1/2-13 | 0.562" x 0.750" | 3PN4X-45K | 575 | TERMINAL BLOCKS |

DRAWINGS
 APPROVAL
 RECORD
 OTHER

| | | | |
|------------------------|--|---------|---|
| PRIMARY VOLTAGE | 480 DELTA | CUST. | XXXXXXX |
| SECONDARY VOLTAGE | 208Y/120 | JOB | |
| TEMPERATURE RISE IN °C | 115 | CATALOG | |
| WINDINGS & TERMINALS | <input type="checkbox"/> ALUMINUM <input checked="" type="checkbox"/> COPPER | NOTE | HAZARDOUS LOCATION (CLASS I, DIVISION II, GROUPS A-D) |
| FREQUENCY HERTZ | 60 | BY | ENG. LOG. |
| PRIMARY TAPS | 456, 468, 492, 504 | DATE | TITLE |
| | | REV | MFG. LOG. |
| | | DATE: | DWG. FILE |
| | | | DWG. NO. |
| | | | 3N4XF408FST30 |

