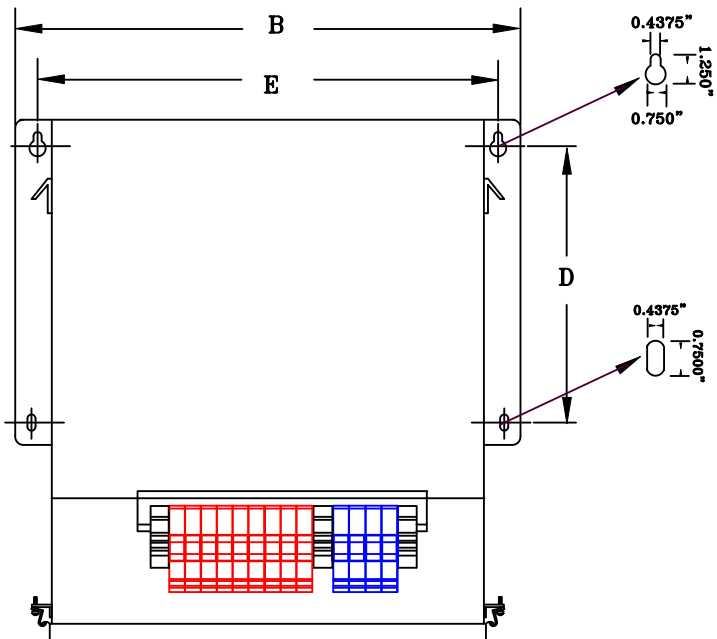


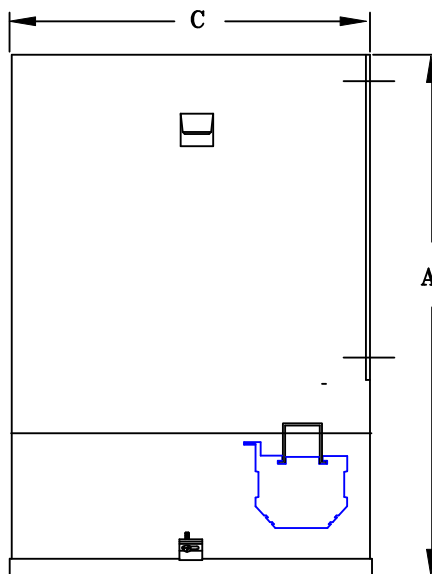
TYPICAL WIRING DIAGRAM

NOTES:

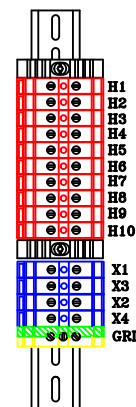
1. ALL UNITS ARE cUL LISTED & DESIGNED ACCORDANCE WITH INDUSTRY STANDARDS.
2. TRANSFORMERS ARE DRY-TYPE, CLASS AA, ENCAPSULATED IP-52 ENCLOSED FOR INDOOR / DUSTPROOF USE.
3. TRANSFORMERS ARE WALL / MACHINE MOUNTABLE VIA THE ATTACHED BRACKETS.
4. TRANSFORMERS ARE CONSTRUCTED BASED UPON A 40°C AMBIENT ENVIRONMENT.
5. MAINTAIN 1" CLEARANCE FROM ALL LIVE PARTS.
6. PAINT COLOR IS RAL# 7042.



FRONT VIEW



SIDE VIEW



TERMINAL VIEW

APPROXIMATE DIMENSIONS (INCHES)

| KVA | A | B | C | D | E | F | HARDWARE | MTG SLOTS | ENCLOSURE | lbs. | WEATHER SHIELD | TERMINAL TYPE |
|------|-------|-------|-------|------|-------|------|----------|-----------------|-----------|------|----------------|---------------|
| 7.5* | 15.25 | 15.50 | 11.00 | 8.50 | 14.38 | ---- | 3/8-16 | 0.437" x 0.750" | N15 | 200 | N/A | TBs |

* ELECTROSTATIC SHIELD GROUNDED TO TRANSFORMER CASE AT FACTORY (IF APPLICABLE)

DRAWINGS
 APPROVAL
 RECORD
 OTHER

| | | | | |
|------------------------|--|---------|---------------------------------------|--|
| PRIMARY VOLTAGE | 190-208-220-240 x 380-415-440-480 | CUST. | XXXXXXXX | |
| SECONDARY VOLTAGE | 120 x 240 | JOB | | |
| TEMPERATURE RISE IN °C | 115 | CATALOG | | |
| WINDINGS & TERMINALS | <input type="checkbox"/> ALUMINUM <input checked="" type="checkbox"/> COPPER | NOTE | ELECTROSTATICALLY SHIELDED, CE MARKED | |
| FREQUENCY IN HERTZ | 50/60 | BY | ENG. LOG. | TITLE |
| PRIMARY TAPS | NONE | DATE | | 1-PHASE, 600 VOLT CLASS ISOLATION DRY TYPE TRANSFORMER |
| | | REV | MFG. LOG. | DWG. NO. |
| | | DATE: | DWG. FILE | PCE-1-7.5K-121-IP52 |