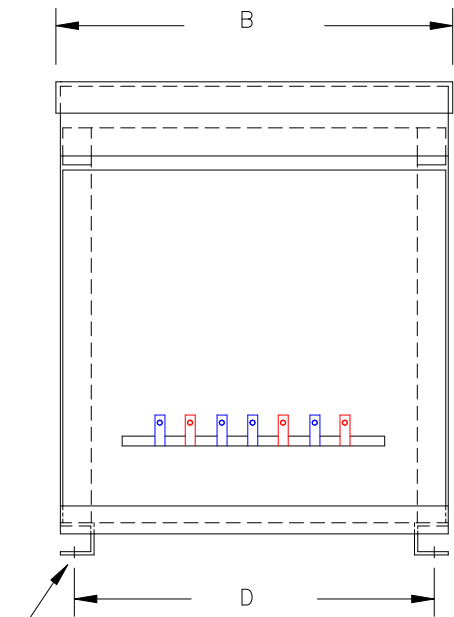


TYPICAL WIRING DIAGRAM

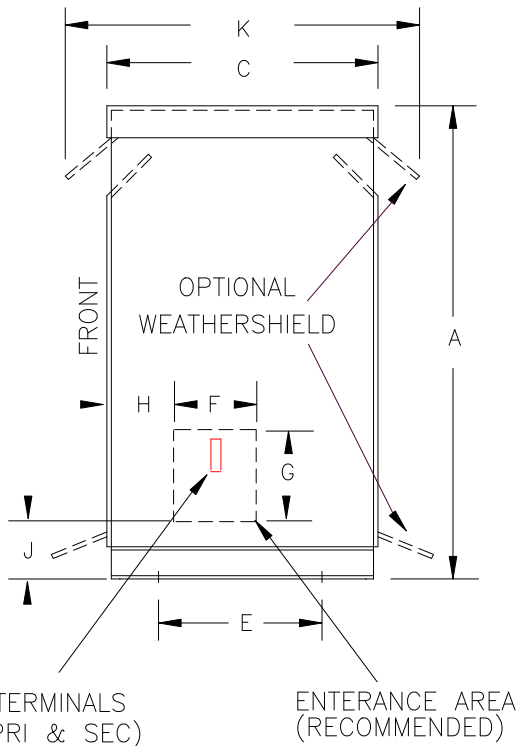
**NOTES:**

1. ALL UNITS ARE DESIGNED IN ACCORDANCE WITH INDUSTRY STANDARDS.
2. TRANSFORMERS ARE DRY-TYPE, CLASS AA, VENTILATED NEMA 2 ENCLOSED FOR INDOOR USE.
3. TRANSFORMERS ARE FLOOR MOUNTED.
4. AVAILABLE ACCESSORIES FOR THIS UNIT:  
A) OUTDOOR WEATHERSHIELD KIT  
B) WALL MOUNTING BRACKETS
5. TRANSFORMERS ARE CONSTRUCTED BASED UPON A 40°C AMBIENT ENVIRONMENT.
6. MAINTAIN 1" CLEARANCE FROM ALL LIVE PARTS.
7. PAINT COLOR IS ANSI# 61.



(4) 0.625" dia. MOUNTING HOLES

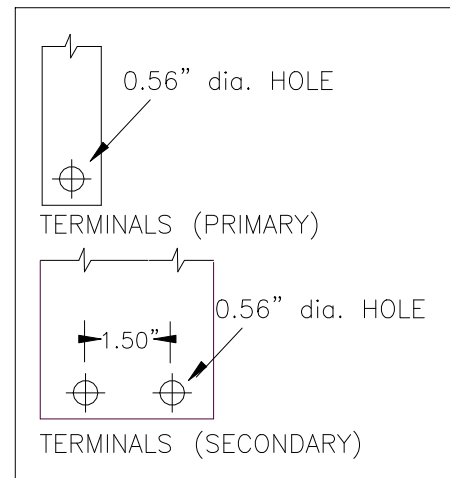
FRONT VIEW



TERMINALS (PRI & SEC)

ENTERANCE AREA (RECOMMENDED)

SIDE VIEW



TERMINAL DETAILS

**APPROXIMATE DIMENSIONS ( INCHES )**

| KVA   | A     | B     | C     | D     | E     | F    | G    | H    | J    | K     | L    | BOX    | lbs. | WEATHER SHIELD | TERMINAL TYPE |
|-------|-------|-------|-------|-------|-------|------|------|------|------|-------|------|--------|------|----------------|---------------|
| 75.0* | 45.50 | 24.38 | 20.00 | 22.50 | 16.75 | 6.00 | 6.00 | 7.00 | 5.75 | 24.12 | ---- | PT-75K | 610  | WS-7           | BUSBAR        |

\* ELECTROSTATIC SHIELD GROUNDED TO TRANSFORMER CASE AT FACTORY ( IF APPLICABLE )

DRAWINGS  
 APPROVAL  
 RECORD  
 OTHER

|                        |  |           |                            |   |  |
|------------------------|--|-----------|----------------------------|---|--|
| PRIMARY VOLTAGE        | 600  | CUST.     | XXXXXXXXXX                 |   |  |
| SECONDARY VOLTAGE      | 120 x 240  | JOB       |                            |   |  |
| TEMPERATURE RISE IN °C | 150  | CATALOG   |                            |   |  |
| WINDINGS & TERMINALS   | <input checked="" type="checkbox"/> ALUMINUM <input type="checkbox"/> COPPER | NOTE      | ELECTROSTATICALLY SHIELDED |   |  |
| FREQUENCY IN HERTZ     | 60   | BY        | ENG. LOG.                  | TITLE<br>1-PHASE, 600 VOLT CLASS ISOLATION DRY TYPE TRANSFORMER |  |
| PRIMARY TAPS           | 540, 555, 570, 585, 615, 630   | DATE      |                            |   |  |
| POWERTRAN              | REV  | MFG. LOG. | DWG. NO.                   |   |  |
|                        | DATE:  | DWG. FILE | PT600-75K-EE               |   |  |